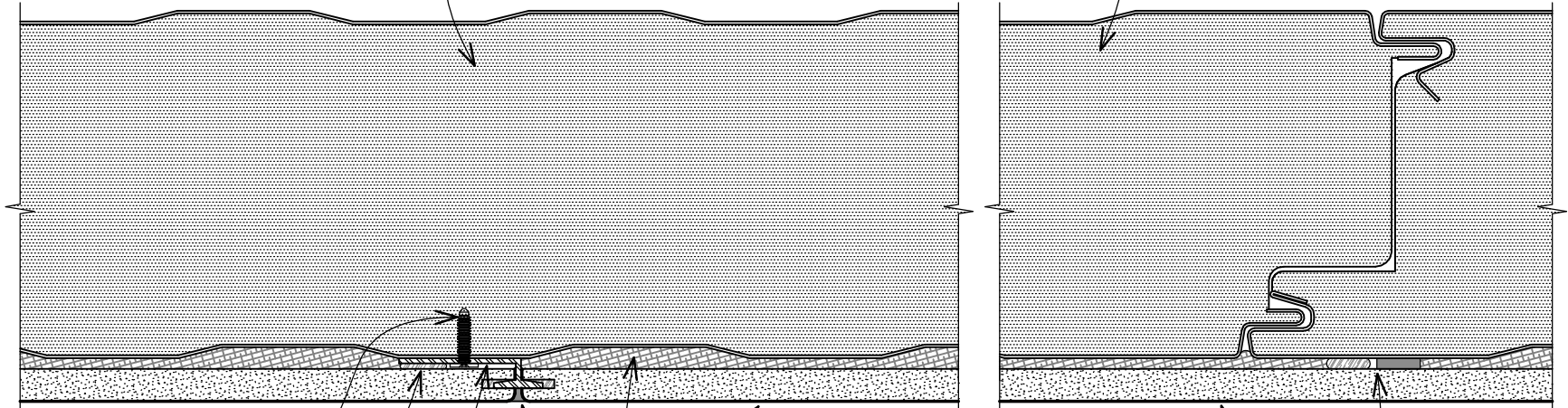


THE INFORMATION CONTAINED IN THIS DOCUMENT IS PROPRIETARY TO ARCOPLAST. ALL COPYRIGHTS AND OTHER PROPRIETARY RIGHTS APPLICABLE SHALL REMAIN AT ALL TIMES ARCOPLAST'S PROPERTY. DOCUMENTS SHALL NOT BE USED, COPIED OR HARVESTED FROM THE CAD FILE. THE INFORMATION CONTAINED WITHIN WITHOUT THE WRITTEN CONSENT OF ARCOPLAST. DOCUMENTS, DESIGNS, DRAWINGS AND SPECIFICATIONS ARE CONCEPTUAL IN NATURE AND AND ARE INTENDED TO SET FORTH DESIGN INTENT ONLY AND ARE NOT TO BE USED FOR ENGINEERING PURPOSES.

**COLD STORAGE TYPICAL INSULATED CEILING PARTITION**



PANCAKE HEAD FRAMING SCREW,  
#8 x 0.625" (15.88 mm) @ 12" (30 cm) O.C. (TYP.)

ARCOPLAST STRUCTURAL ADHESIVE (A-2020)

ARCOPLAST EXTRUDED ALUMINUM SPLINE

ARCOPLAST BIO-SEAL (A-1010)  
WHITE FINISHING COMPOUND

ARCOPLAST 3/8" (9.5 mm) ACRYLOYL  
(ENGINEERED POLYMER) CEILING PANEL

1/2" WIDE 3M TWO SIDED TAPE (VHB-4959) W/  
CONTINUOUS BEAD OF ARCOPLAST STRUCTURAL  
ADHESIVE (A-2020), SIDE BY SIDE, ADHESIVE SHALL  
BE LOCATED CLOSEST TO ARCOPLAST SPLINE  
VERTICAL ON HIGH POINT(S) OF CEILING  
PARTITIONS @ NO MORE THAN 16" (40.6 cm) O.C.

FULL TROWELED ADHESIVE PUTTY  
TO ELIMINATE RIB VOIDS

**ACRYLOYL (ENGINEERED POLYMER) CEILING PANEL SPLINE ASSEMBLY, INSULATED METAL PANEL SYSTEM**

DWG #  
CDA-4-EP

SCALE  
6" (1:2)

DATE  
2/20/2020

CHECKED  
GB



1873 WILLIAMSTOWN DRIVE  
ST. PETERS, MISSOURI USA 63376  
T: 888-736-2726 F: 636-978-7782

WWW.ARCOPLAST.COM