

THE INFORMATION CONTAINED IN THIS DOCUMENT IS PROPRIETARY TO ARCOPLAST. ALL COPYRIGHTS AND OTHER PROPRIETARY RIGHTS APPLICABLE SHALL REMAIN AT ALL TIMES ARCOPLAST'S PROPERTY. DOCUMENTS SHALL NOT BE USED, COPIED OR HARVESTED FROM THE CAD FILE. THE INFORMATION CONTAINED WITHIN WITHOUT THE WRITTEN CONSENT OF ARCOPLAST. DOCUMENTS, DESIGNS, DRAWINGS AND SPECIFICATIONS ARE CONCEPTUAL IN NATURE AND AND ARE INTENDED TO SET FORTH DESIGN INTENT ONLY AND ARE NOT TO BE USED FOR ENGINEERING PURPOSES.

**16 GAUGE GALVANIZED METAL FURRING STRIPS**  
**2.5" (63.5 mm) x CONTINUOUS LENGTH**  
**SPACED AT 16" (400 mm) O.C. (TYP.) OR**  
**AT LOCATIONS OF STUD SPACING**

**DRYWALL SCREW TO ATTACH METAL STRIP(S)**  
**1.25" (31.76 mm) @ 12" (30 cm) O.C. (TYP.)**

**METAL STUDS @ 16" (400 mm) O.C.**

**16" (400 mm) O.C. (TYP. STUD SPACING)**

**5/8" (15.9 mm) FIRE RATED GYPSUM BOARD**

**ARCOPLAST 1/2" (12.5 mm) ACRYLOYL**  
**(ENGINEERED POLYMER) WALL PANEL**

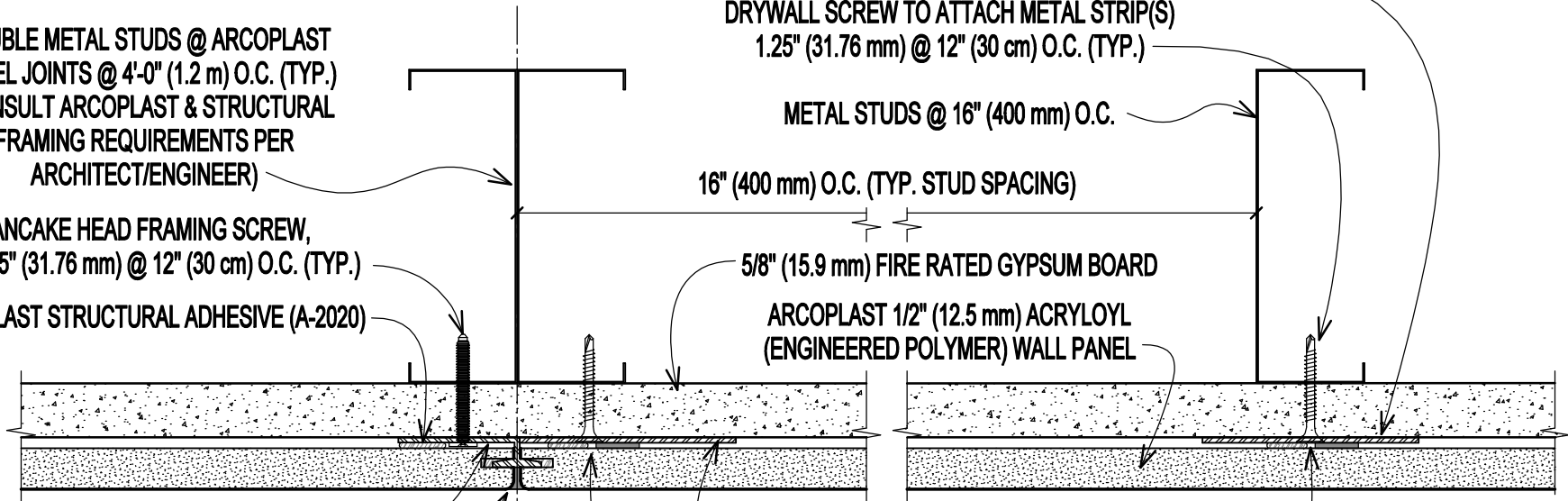
**DOUBLE METAL STUDS @ ARCOPLAST**  
**PANEL JOINTS @ 4'-0" (1.2 m) O.C. (TYP.)**  
**(CONSULT ARCOPLAST & STRUCTURAL**  
**FRAMING REQUIREMENTS PER**  
**ARCHITECT/ENGINEER)**

**PANCAKE HEAD FRAMING SCREW,**  
**#8 x 1.25" (31.76 mm) @ 12" (30 cm) O.C. (TYP.)**  
**ARCOPLAST STRUCTURAL ADHESIVE (A-2020)**

**ARCOPLAST EXTRUDED ALUMINUM SPLINE**  
**ARCOPLAST BIO-SEAL (A-1010)**  
**WHITE FINISHING COMPOUND**

**POSITION NEXT TO SPLINE ATTACHMENT**  
**16 GAUGE GALVANIZED METAL FURRING STRIPS**  
**2.5" (63.5 mm) x CONTINUOUS LENGTH**

**1/2" WIDE 3M TWO SIDED TAPE (VHB-4956) W/**  
**CONTINUOUS BEAD OF ARCOPLAST STRUCTURAL**  
**ADHESIVE (A-2020), SIDE BY SIDE, ADHESIVE SHALL**  
**BE LOCATED CLOSEST TO ARCOPLAST SPLINE**



**ACRYLOYL (ENGINEERED POLYMER) WALL PANEL OVER GYPSUM BOARD SPLINE ASSEMBLY**

DWG # PP-2-EP	SCALE 6" (1:2)
DATE 2/20/2020	CHECKED GB



1873 WILLIAMSTOWN DRIVE  
 ST. PETERS, MISSOURI USA 63376  
 T: 888-736-2726 F: 636-978-7782

WWW.ARCOPLAST.COM