

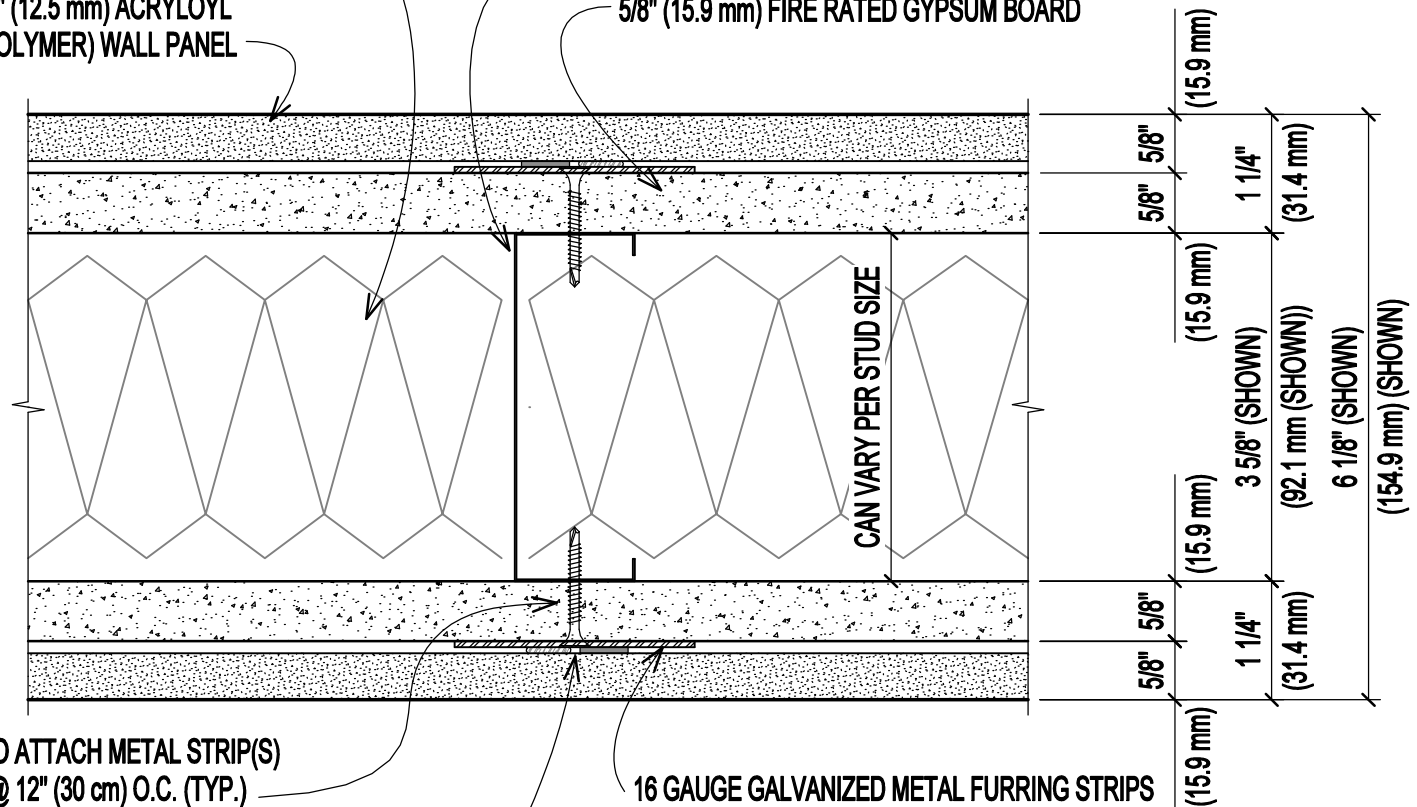
THE INFORMATION CONTAINED IN THIS DOCUMENT IS PROPRIETARY TO ARCOPLAST. ALL COPYRIGHTS AND OTHER PROPRIETARY RIGHTS APPLICABLE SHALL REMAIN AT ALL TIMES ARCOPLAST'S PROPERTY. DOCUMENTS SHALL NOT BE USED, COPIED OR HARVESTED FROM THE CAD FILE, THE INFORMATION CONTAINED WITHIN WITHOUT THE WRITTEN CONSENT OF ARCOPLAST. DOCUMENTS, DESIGNS, DRAWINGS AND SPECIFICATIONS ARE CONCEPTUAL IN NATURE AND ARE INTENDED TO SET FORTH DESIGN INTENT ONLY AND ARE NOT TO BE USED FOR ENGINEERING PURPOSES.

SOUND ATTENUATION FIRE BLANKET (SAFB)
FRICTION FIT BETWEEN STUDS, VERIFY
THICKNESS WITH WALL THICKNESS, (3-1/2" (88.9 mm) MIN.)

METAL STUDS @ 16" (400 mm) O.C.

ARCOPLAST 1/2" (12.5 mm) ACRYLOYL
(ENGINEERED POLYMER) WALL PANEL

5/8" (15.9 mm) FIRE RATED GYPSUM BOARD



DRYWALL SCREW TO ATTACH METAL STRIP(S)
1.25" (31.76 mm) @ 12" (30 cm) O.C. (TYP.)

16 GAUGE GALVANIZED METAL FURRING STRIPS
2.5" (63.5 mm) x CONTINUOUS LENGTH
SPACED AT 16" (400 mm) O.C. (TYP.) OR
AT LOCATIONS OF STUD SPACING

1/2" WIDE 3M TWO SIDED TAPE (VHB-4959) W/
CONTINUOUS BEAD OF ARCOPLAST STRUCTURAL
ADHESIVE (A-2020), SIDE BY SIDE

ACRYLOYL (ENGINEERED POLYMER) PANEL OVER GYPSUM BOARD WALL PARTITION

DWG # PP-5-EP	SCALE 6" (1:2)
DATE 2/20/2020	CHECKED GB



1873 WILLIAMSTOWN DRIVE
 ST. PETERS, MISSOURI USA 63376
 T: 888-736-2726 F: 636-978-7782

WWW.ARCOPLAST.COM