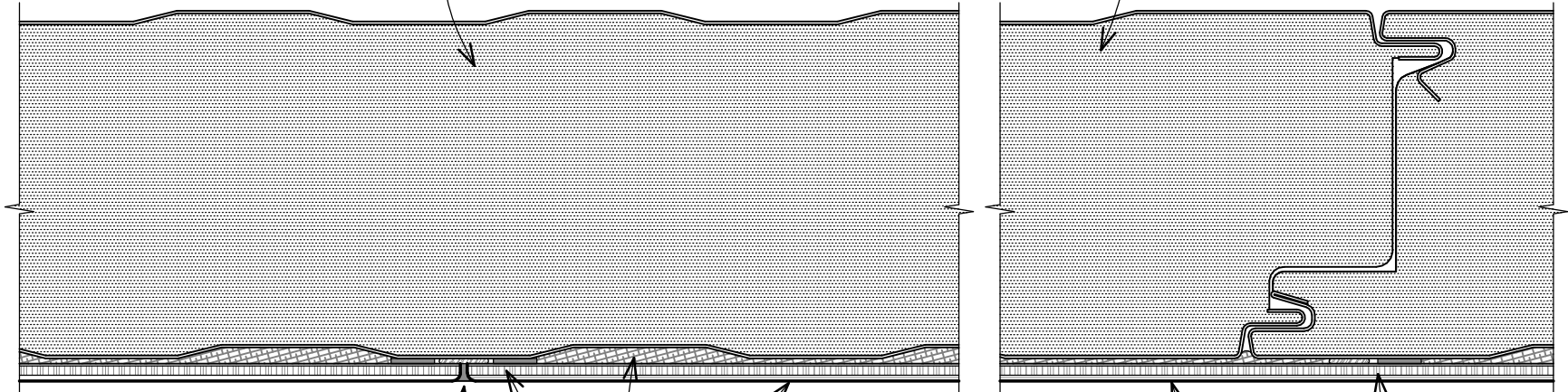


THE INFORMATION CONTAINED IN THIS DOCUMENT IS PROPRIETARY TO ARCOPLAST. ALL COPYRIGHTS AND OTHER PROPRIETARY RIGHTS APPLICABLE SHALL REMAIN AT ALL TIMES ARCOPLAST'S PROPERTY. DOCUMENTS SHALL NOT BE USED, COPIED OR HARVESTED FROM THE CAD FILE. THE INFORMATION CONTAINED WITHIN WITHOUT THE WRITTEN CONSENT OF ARCOPLAST. DOCUMENTS, DESIGNS, DRAWINGS AND SPECIFICATIONS ARE CONCEPTUAL IN NATURE AND AND ARE INTENDED TO SET FORTH DESIGN INTENT ONLY AND ARE NOT TO BE USED FOR ENGINEERING PURPOSES.

COLD STORAGE TYPICAL INSULATED WALL PARTITION



ARCOPLAST BIO-SEAL (A-1010)
WHITE FINISHING COMPOUND

ARCOPLAST 3/16" (5mm) GFRMC
WALL PANEL

(2) TWO ROWS 1/2" WIDE 3M TWO SIDED TAPE (VHB-4959),
CONTINUOUS EACH SIDE W/ ARCOPLAST
STRUCTURAL ADHESIVE (A-200)
CENTERED DIRECTLY BEHIND JOINT

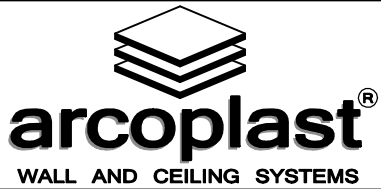
1/2" WIDE 3M TWO SIDED TAPE (VHB-4959) W/
CONTINUOUS BEAD OF ARCOPLAST STRUCTURAL
ADHESIVE (A-200), SIDE BY SIDE, ADHESIVE SHALL
BE LOCATED CLOSEST TO ARCOPLAST SPLINE
VERTICAL ON HIGH POINT(S) OF WALL
PARTITIONS @ NO MORE THAN 16" (40.6 cm) O.C.

FULL TROWELED ADHESIVE PUTTY
TO ELIMINATE RIB VOIDS

GFRMC WALL PANEL JOINT ASSEMBLY, INSULATED METAL PANEL SYSTEM

DWG #
PP-17-MC

SCALE
6" (1:2)



1873 WILLIAMSTOWN DRIVE
ST. PETERS, MISSOURI USA 63376
T: 888-736-2726 F: 636-978-7782

DATE
2/20/2020

CHECKED
GB

WWW.ARCOPLAST.COM