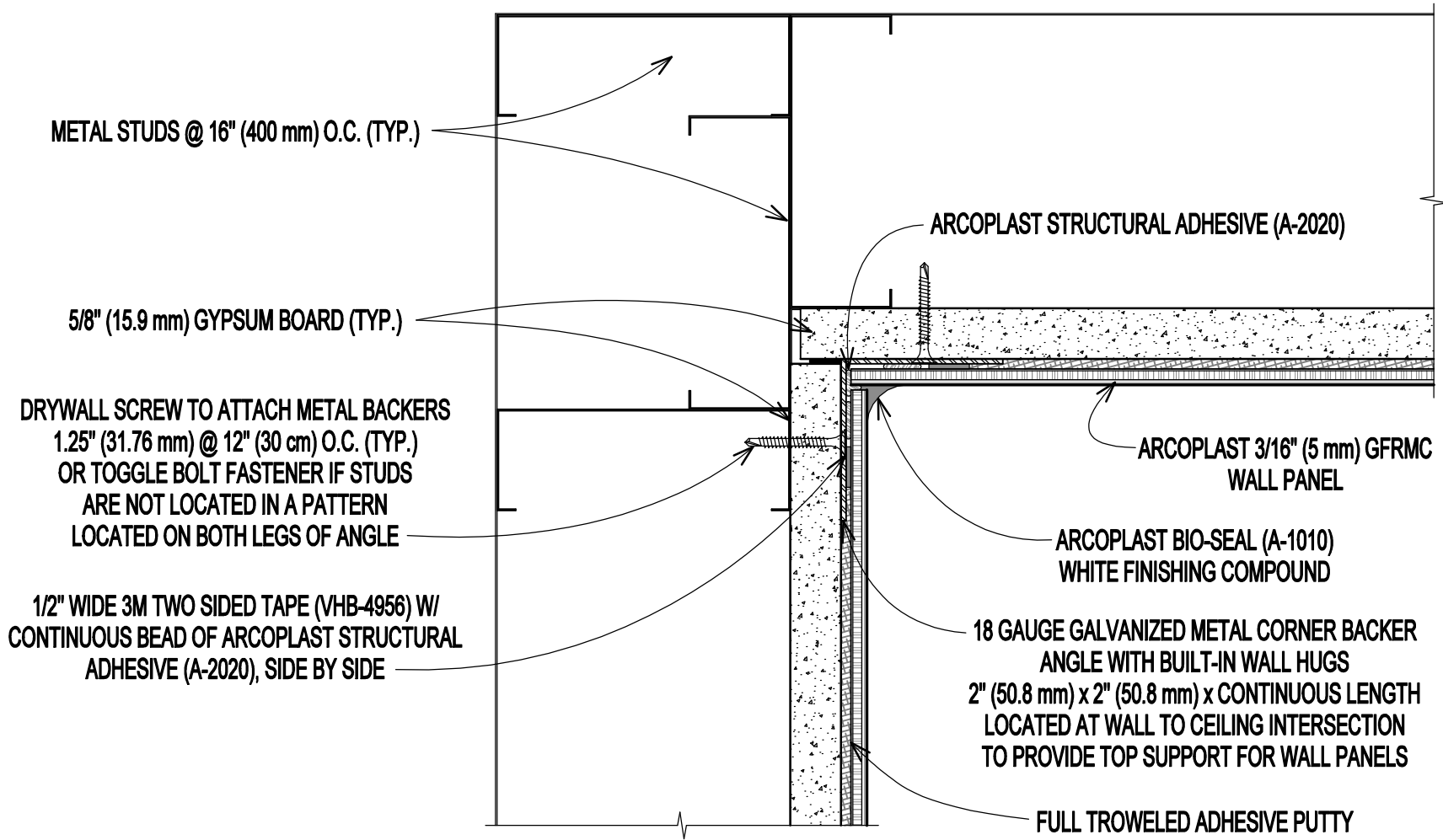


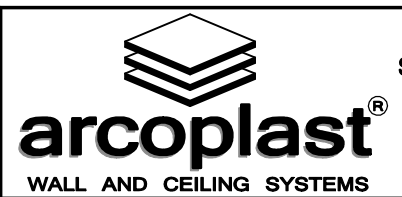
METAL BACKERS MUST BE FASTENED TO STRUCTURAL MEMBERS WHENEVER POSSIBLE TO HAVE A SOUND FINISHED ASSEMBLY. CONTACT ARCOPLAST IF THERE ARE ANY QUESTIONS OF ATTACHMENT DETAILS AND PRACTICES.

THE INFORMATION CONTAINED IN THIS DOCUMENT IS PROPRIETARY TO ARCOPLAST. ALL COPYRIGHTS AND OTHER PROPRIETARY RIGHTS APPLICABLE SHALL REMAIN AT ALL TIMES ARCOPLAST'S PROPERTY. DOCUMENTS SHALL NOT BE USED, COPIED OR HARVESTED FROM THE CAD FILE, THE INFORMATION CONTAINED WITHIN WITHOUT THE WRITTEN CONSENT OF ARCOPLAST. DOCUMENTS, DESIGNS, DRAWINGS AND SPECIFICATIONS ARE CONCEPTUAL IN NATURE AND ARE INTENDED TO SET FORTH DESIGN INTENT ONLY AND ARE NOT TO BE USED FOR ENGINEERING PURPOSES.



GFRMC WALL PANEL (5.0 MM) OVER GYPSUM BOARD, WALL TO WALL INSIDE CORNER

DWG # PP-36-MC	SCALE 6" (1:2)
DATE 2/20/2020	CHECKED GB



1873 WILLIAMSTOWN DRIVE
ST. PETERS, MISSOURI USA 63376
T: 888-736-2726 F: 636-978-7782
WWW.ARCOPLAST.COM