

ARCOPLAST
1879 Williamstown Drive
Saint Peters, MO 63376

March 17, 2011
Lab No. 11P-0665
Page 8 of 8

Attention: Ghislain Beauregard

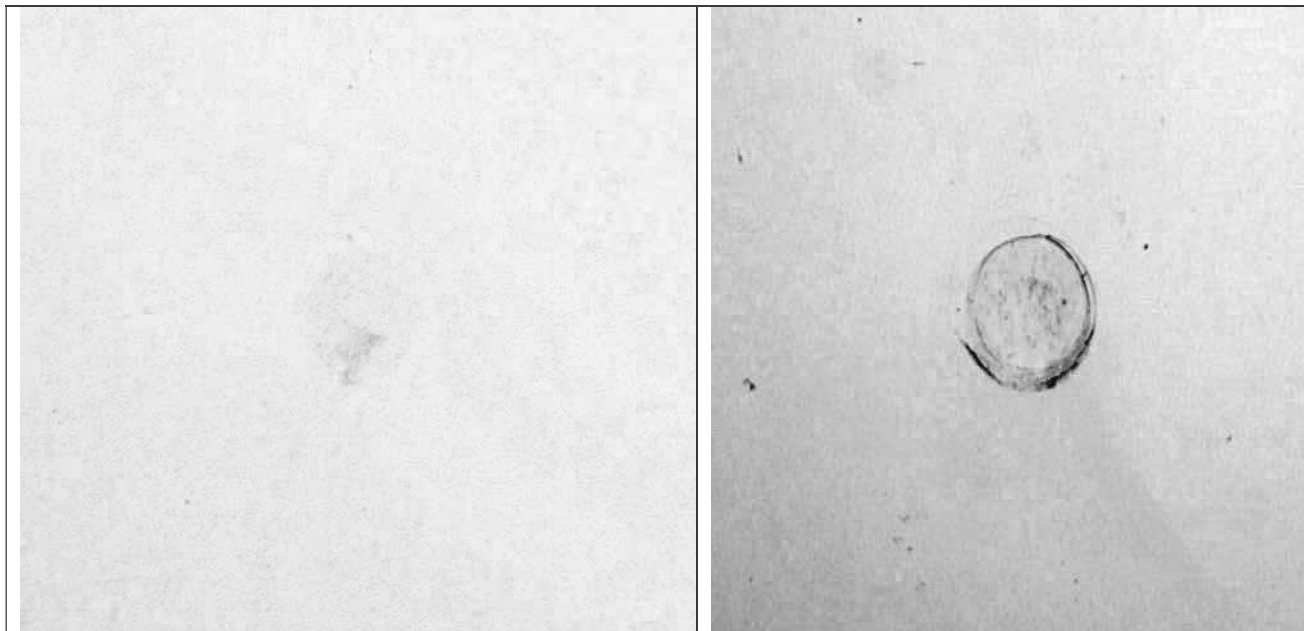
REPORT OF ANALYSIS

SAMPLE: Arcoplast 9.5 mm Solid Glass/Resin Core Panel

SUBJECT: Impact Resistance

METHOD: 2.0 lb. Steel Ball Dropped From Elevation

Results: Cracking of the surface occurred at 18.0'



Karl Schmitz, Director
Materials Testing



Certificate No. 0397-01
Certificate No. 0397-02

AN OFFICIAL COPY OF TEST REPORT WILL BE PROVIDED BY THIS LABORATORY ON REQUEST.
NOT OFFICIAL WITHOUT THE RAISED SEAL OF ST. LOUIS TESTING LABORATORIES, INC.
SEE REVERSE FOR CONDITIONS.

